

# Conifer ID Plant Walk Fall City Neighborhood

Nikki Windon

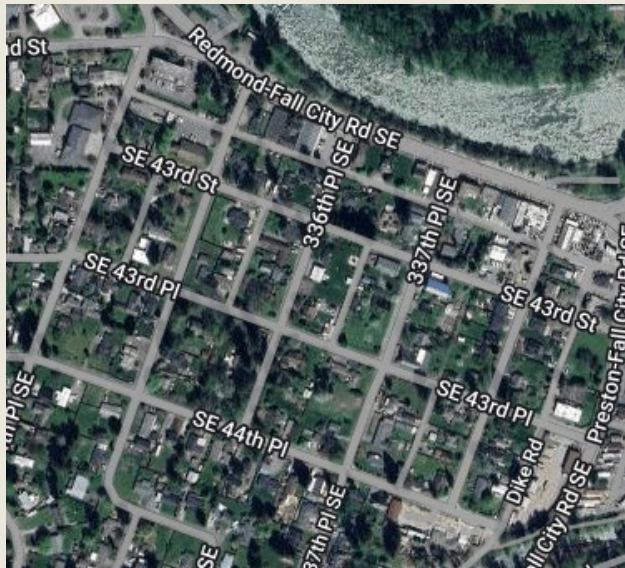
Hort 107

Winter 2025

# Plant Walk

# Location Information

- ▶ Neighborhood has a few historical houses, with the majority of house builds dating in the 50s-70s, along with some newer builds
- ▶ Plants are receiving full sun, and on flat ground unless otherwise noted
- ▶ Soil is well draining





# *Hesperocyparis arizonica*

## Arizona cypress



Soccer ball cones and yellow male pollen cones



# *Cunninghamia lanceolata*

## China fir, false China fir



This plant is placed on the south-east side of house.



*Cryptomeria japonica* 'Sekkan-Sugi'  
golden cryptomeria





# *Cryptomeria japonica* 'Tansu'

## Tansu cryptomeria



This plant is located within a raised bed, in full sun. The triad color, and arrangement of leaves really help this little beauty stand out!





# Platycladus orientalis 'Aurea Nana'

## Oriental arborvitae





# *Picea abies* 'Pendula' weeping Norway spruce



The upper left hand plant is actually located at a different site from the other two pictures, but it was cool to see a baby weeping Norway spruce! This one is located in full sun.

The right, more mature tree, is located on the south-east facing side of the house. There is an alleyway just off to the lower right (cut out of image), which doesn't give this plant a lot of room for non-compacted root growth.



*Picea pungens* 'Glauca'  
Colorado blue spruce





*Cedrus atlantica* 'Glauca'  
blue Atlas cedar





# *Cedrus deodara*

## deodar cedar



I believe this to be a juvenile *Cedrus deodara*, and if so, wonder why it was planted so close to the *Cedrus atlantica* "Glauca" pictured in the previous slide



*Thuja plicata* (unsure cultivar)  
golden variety, Western red cedar



While not on the list, this was an interesting cultivar to see and it did make me go through the diagnostic list. 'Zebrina' appears more variegated / striped than this cultivar, and grows quite large.



# *Juniperus communis* 'Cracovia'

## common juniper



Another cultivar not on the list, but these colors are amazing, and very similar to the *Cryptomeria japonica* 'Tansu' pictured earlier. This plant's leaves, however, is awled.



# *Sequoiadendron giganteum* 'Pendulum'

weeping sequoia



This plant is around the corner from the *Cunninghamia lanceolata*, and is against the south-western face of the house.



*Pinus densiflora*  
Japanese red pine





*Sequoiadendron giganteum*  
giant sequoia





# *Abies amabilis*

## silver fir



The light grey bark with lateral resin blisters helped identify this tree. It does seem to be in poor health, and slow growing given the amount of lichen attached to it. This particular house keeps an immaculate yard, free of plant debris.

